

WTW Software – Simple and Convenient

MultiLab® Importer

- Data transfer directly into Excel®
- Easy and convenient
- Free-of-charge download from the internet

Free-of-charge software for transferring data from MultiLine® and ProfiLine portables directly into Excel®

(See also synoptical table Meters/Cables/Software)

MultiLab® Importer is a free-of-charge Excel® add-in for easy transfer of measuring data from the digital MultiLine® as well as ProfiLine portable meters.

When clicking the “Import Data” button, the meter will be automatically recognized. The data is transferred in a formatted way and can be processed directly. The only prerequisite is Excel®.

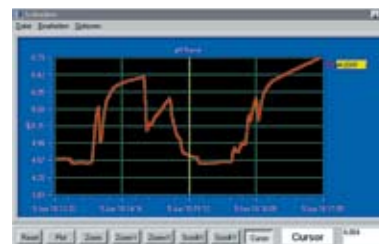
MultiLab® pilot

- Digital online recorder
- Export function for Word, Excel, Access and other programs
- Free-of-charge download from the internet

The free-of-charge software package for all laboratory and portable instruments, can be downloaded from the internet

(See also synoptical table Meters/Cables/Software)

“MultiLab® pilot” controls the measurement and carries out data transfer and storage. The data can be shown online as a table or graph, or off-line transferred to a printer. The inoLab® 740/7400* and 750/7500* can be controlled actively.



ACHAT OC

- Min. software requirements:
Windows 3.1 update options on request.
- Necessary accessories:
Connection cable AK 540/B.

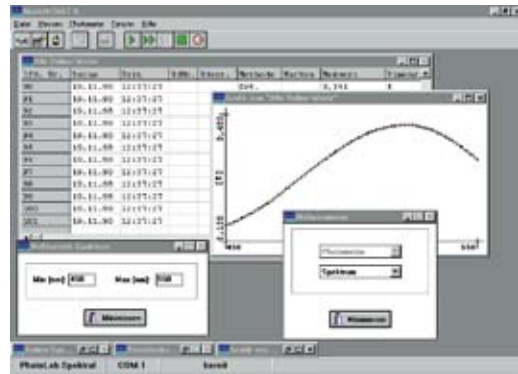
Communication program for BOD Measurement with OxiTop® Control

Stored measuring data can be easily transferred from the OxiTop® Control system to a PC with the communication program ACHAT OC. These transferred data can be processed by PC or the Controller OC 100/OC 110.

* North American version

Multi/ACHAT II

- dBASE format
- Sorting according to measurement parameter
- Windows program with context-sensitive menus and help programs



PC-Software Multi/ACHAT II: PC Communication with WTW Photometers photoLab® S6/S12

PC-Software photoLab® Data spectral

Convenient data management for the photoLab® 6000 series

see page 102

PC-Software LSData

Convenient data management for the pHotoFlex®/Turb® 430 series

see page 108



Overview of Meters/Cables/Software

MI = MultiLab® Importer Mp = MultiLab® pilot AO = ACHAT OC MA = Multi/ACHAT II pDS = photoLab® Data spectral LS = LSdata							
b = bidirectional f = can be remote controlled u = unidirectional							
Instrument	Software	Interface cables	Type	Instrument	Software	Interface cables	Type
Cond 197i, 1970i	Mp	AK 340/B, AK 325/S	b	Oxi 197i, 1970i	Mp	AK 340/B, AK 325/S	b
Cond 340i/3400i*	Mp	AK 340/B, AK 325/S	b	Oxi 340i/3400i*	Mp	AK 340/B, AK 325/S	b
inoLab® 730/7300*	Mp	AK 340/B	b	OxiTop® OC 100/110	AO	AK 540 B	u
inoLab® 735/7350*	Mp	AK 340/B	b	pH 197i, 1970i	Mp	AK 340/B, AK 325/S	b
inoLab® 740/7400*	Mp	M-PC/5, AK T-PC, AK T-P9 PIN/25 PIN, AK T-R 2ST	f	pH 340i/3400i*	Mp	AK 340/B, AK 325/S	b
inoLab® 750/7500*	Mp	M-PC/5, AK T-PC, AK T-P9 PIN/25 PIN, AK T-R 2ST	f	pH/Cond 340i/3400i*	Mp	AK 340/B, AK 325/S	b
inoLab® Level 2	Mp	AK 340/B	b	pH/ION 340i/3400i*	Mp	AK 340/B, AK 325/S	b
inoLab® Level 3	Mp	M-PC/5, AK T-PC, AK T-P9 PIN/25 PIN, AK T-R 2ST	f	pH/Oxi 340i/3400i*	Mp	AK 340/B, AK 325/S	b
Multi 197i, 1970i	Mp	AK 340/B, AK 325/S	b	pHotoFlex® Serie	LS	AK 540 B, ADA USB	u
Multi 340i/3400i*	Mp	AK 340/B, AK 325/S	b	photoLab® S6, S12	MA	AK Labor	b
Multi 350i/3500i*	Mp	AK 340/B, AK 325/S	b	photoLab® 6000 Serie	pDS	SK/TC	b
MultiLine®	MI	AK USB A-Mini	b	ProfiLine 3310	Mp, MI	AK USB A-Mini	b
3410/3420/3430				Turb® 430 Serie	LS	AK 540 B, ADA USB	u

Ordering Information

	Order No.
KOM pilot	Communications package, consisting of 1 x MultiLab® pilot and 1 AK 340/B
photoLab® Data spectral	PC software for easy data management
LSdata	PC software for pHotoFlex®/Turb® 430 series
Multi/ACHAT II	Software for PC under Windows, German and English
KOM Labor	Communications package, consisting of: 1 x Multi/ACHAT II and 1 AK Labor
ACHAT OC	PC communication program for Controller OxiTop® OC 100 or OC 110 for further processing of measuring data
ADA USB/Ser	Adapter USB serial interface RS 232 (9-pin socket)

* North American version

For additional accessories and interface cables, see WTW Product Details.

WTW Printers

WTW instruments with a serial interface can be connected directly to a PC (see software section). Data can therefore be printed by using the PC printer.

For protocol purposes, a printer can also be connected directly.

For instruments with a serial interface WTW offers suitable printers and cables. As the transmission rate (baud rate) of most instruments is permanently fixed, it may be necessary to set the printer to the suitable transmission rate.



P 3001



LQ 300+

Technical Data			
Model	P 3001	inoLab® printer	LQ 300+
Printing method	Thermal printer		24-pin matrix printer
Printing line	40 characters/line	–	80 characters at 10 cpi
Paper width	112 mm (4.41 in)		182 mm ... 216 mm (7.17 ... 8.50 in) (single sheet, autom. feed)
Type of paper	Thermal printer paper, normal quality: legible approx. 5 years high quality: legible at least 10 years		Normal paper 52.3 g/m ² ... 90 g/m ²
Size (W x D x H)	170 x 170 x 66 mm (6.69 x 6.69 x 2.60 in)	–	366 x 275 x 141 mm (14.41 x 10.83 x 5.55 in)
Weight	Approx. 1 kg (2.20 lb)	–	Approx. 4.3 kg (9.48 lb)
Power supply	230 V AC, 50 Hz rechargeable battery	–	220 V AC ... 240 V AC, 50 Hz ... 60 Hz
Ambient temperature	Operation 0 °C ... 40 °C (32 °F ... 104 °F) Storage -20 °C ... 55 °C (-4 °F ... 131 °F)		+5 °C ... 35 °C (41 °F ... 95 °F) -20 °C ... 55 °C (-4 °F ... 131 °F)
Tested safety to			EN 60 950
Interface(s)	RS 232 (serial) Centronics (parallel)	–	RS 232 (serial) Centronics (parallel)
Ordering Information			
Printer P 3001			Order No.
P 3001	Thermal matrix printer, AC and rechargeable battery operation. Paper width 112 mm (4.41 in), preset baud rate: 4800; preset characters/line: 40		250 045
AK 325/S	Interface cable to connect instrument to P 3001		902 837
AK 540/S	Interface cable to connect instrument to P 3001		902 843
Printer LQ 300+			Order No.
LQ 300+	Matrix printer, AC operation on 230 VAC. Standard paper (A4 or endless)		250 046
AK/LQ 300	Interface cable to connect instrument to LQ 300+ (only photoLab® series, not inoLab®, not 3xx(i) series)		250 746
<i>For further connection cable and accessories, see WTW Product Details.</i>			